

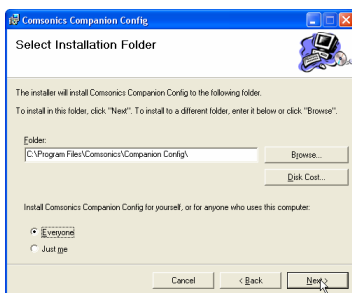
## Configuration Utility Installation

Install the Configuration Utility before connecting the Companion.

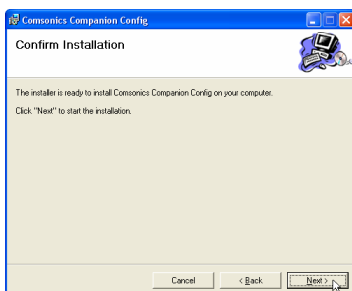
- Place the installation disk into the drive. The installation automatically starts. Follow the on-screen instructions.
- If the auto-start function is turned off, follow the instructions below to manually install the program.
  - Manual Install: Click Start, then click Run. Type D:\SETUP (If your CD-ROM drive is not D, substitute with your drive letter) or choose Browse and select your drive, then select SETUP.EXE. Click OK and follow the on-screen instructions.



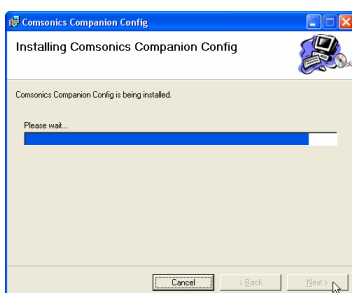
- Click Next in the Setup Wizard window.



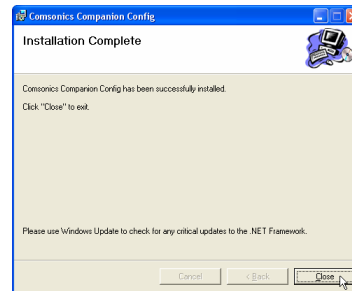
- Select 'Everyone' or 'Just me', and then click Next in the Select Installation Folder window.



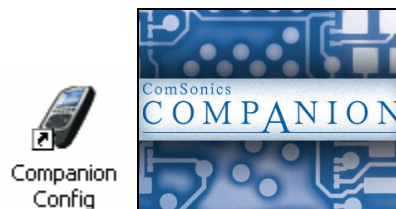
- Click Next in the Confirm Installation window.



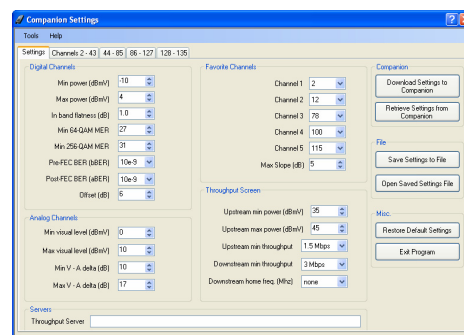
- Installation progress is shown.



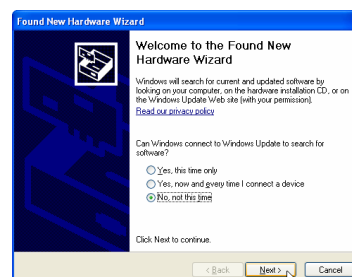
- Click Close in the Installation Complete window to finish the installation. Remove the installation disk from the drive. Note the message 'Please use Windows Updates to check for any critical updates to the .NET Framework'. Click Close.



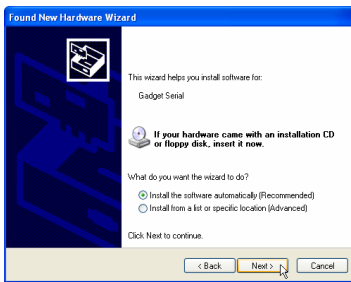
- Double click the Companion Config desktop icon and the Companion splash screen appears briefly.



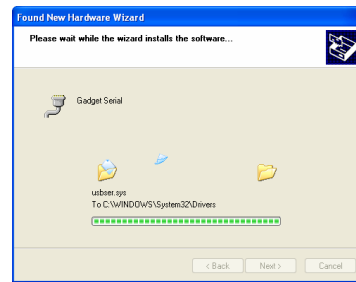
- The Companion Settings window appears.
- Plug the standard USB connector of the configuration cable into an available USB port on the computer. Plug the mini-USB connector end into the configuration port on the Companion. The Companion must be powered on for communications to the PC.
  - First time only:  
After a short delay (with the Companion on), the Found New Hardware Wizard window appears.



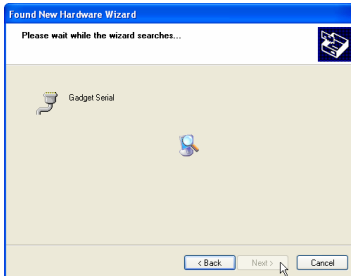
- Select 'No, not this time' and then click Next in the Welcome to the Found New Hardware Wizard window.



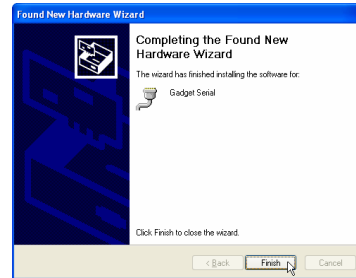
12. Select 'Install the software automatically (Recommended)' and then click Next in the Found New Hardware Wizard window.



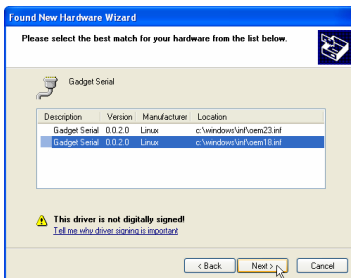
17. The Gadget Serial driver installation continues.



13. The Found New Hardware Wizard searches for the Gadget Serial drivers.

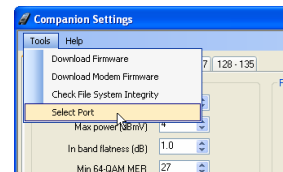


18. Click Finish in the Completing the Found New Hardware Wizard window.



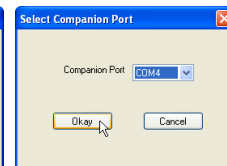
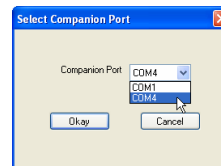
14. If this window appears, the Gadget Serial driver has been previously installed and uninstalled.

- a. Select one of the listed drivers and click Next. If you are prompted to insert a disk, click Cancel. Unplug the USB cable from the Companion and then reconnect the cable. Repeat the above steps, select another of the listed drivers, and click Next. Repeat if necessary.



19. In the Companion Settings window, click Tools and then Select Port.

- a. The Companion must be connected and powered on.

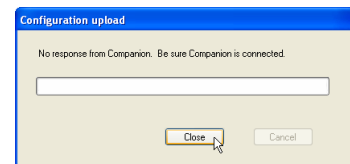


20. Select a Companion Port other than COM1. (COM4 in this particular installation) Click Okay in the Select Companion Port window.

21. In the Companion Settings window, click 'Retrieve Settings from Companion'

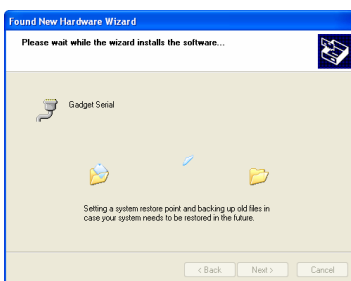


15. Click Continue Anyway in the Hardware Installation window.



22. **Important Note:**

- a. The first time a 'No response from Companion' message will appear.
- b. Unplug the USB cable from the Companion and then reconnect the cable.
- c. Again in the Companion Settings window, click 'Retrieve Settings from Companion'.
- d. Subsequent communications to the Companion will function.



16. The Gadget Serial driver installation starts.